

SOLOMON ISLANDS Experience & Opportunities in CDM projects

Carbon Expo Australasia 2012

John Korinihona

**Ministry of Mines, Energy & Rural Electrification
Solomon Islands Government**

7 November 2012, Melbourne, AUSTRALIA.

Presentation Outline

- q Introduction
- q Energy Situation
- q DNA Status and CDM Opportunities
- q Plans for Low Carbon Development
- q PINs Developed
- q Future Needs and Engagements

Introduction

- Located between latitude 5° and 13° south and longitude 155° to 169° east, to the north east of Australia as depicted
- The country is an archipelago consisting of about one thousand islands scattered over 28,400 square kilometres
- Consists of nine provinces: Central, Choiseul, Guadalcanal, Isabel, Makira, Malaita, Rennell and Bellona, Temotu, and Western and the country's capital is Honiara.
- Population: Stands at 516,000
- Solomon Islands is an LDC
- Key Economic Sectors: Agriculture, Forestry, Fishery, Mining (recently)



Energy Situation

- q Solomon Islands has very low electrification access rate through grid connection – 12% of total number of households connected to grid.
- q Power generation entirely dependent on imported diesel fuel
- q Very high electricity tariff rate – AUD\$0.82 per kWh unit
- q Abundant renewable energy resources: hydro, solar, geothermal, biomass.
- q Past lack of Energy Efficiency & Conservation programmes

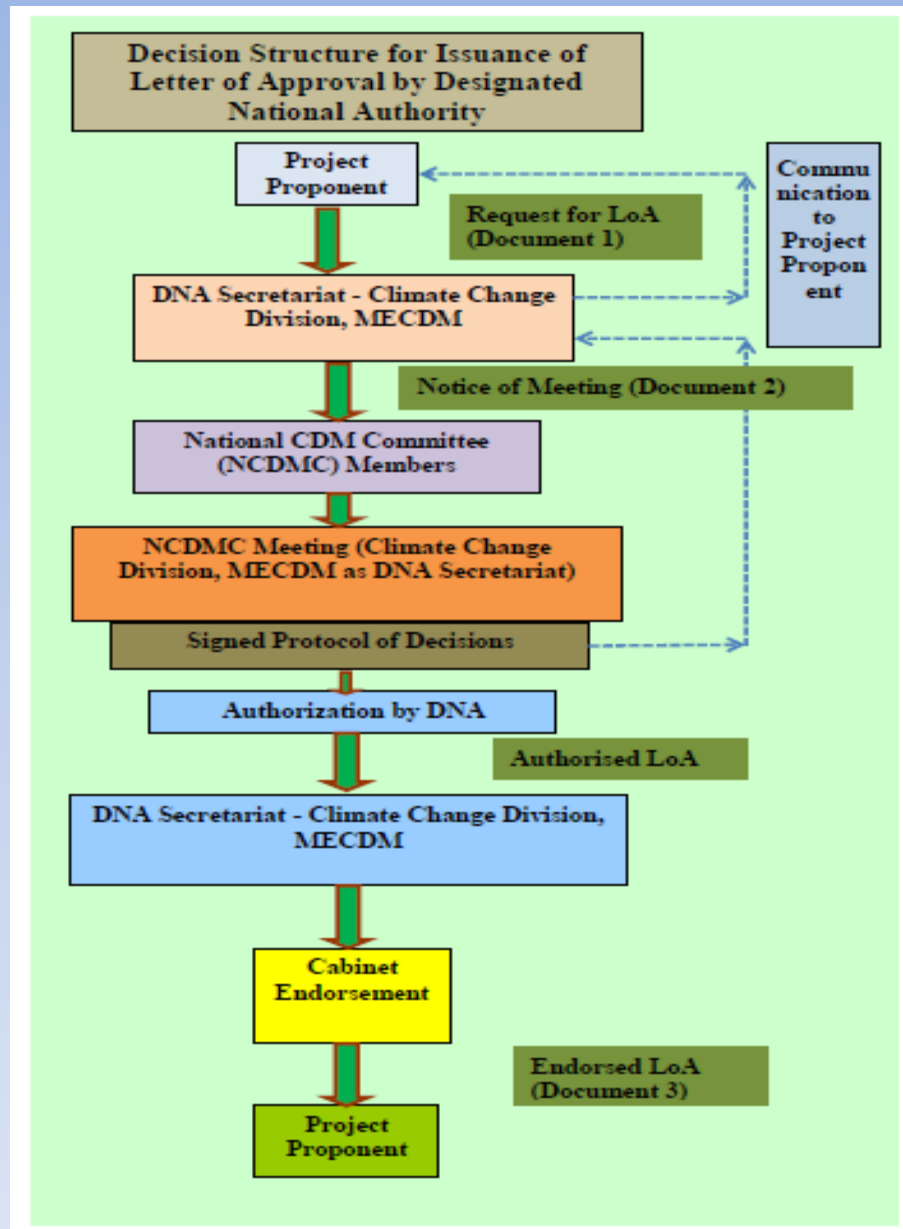
DNA Status and CDM Opportunities

- q DNA is established in MECDM with the National CDM Committee being mandated as overseeing body to issue binding recommendations for the DNA when answering requests for issuing of LON or LOA.
- q Operational Manual provides the National CDM Committee and the DNA Secretariat the eligibility requirements and processes to be followed in the issuance of LON or LOA.
- q The overarching role of the DNA is to decide if Solomon Islands should support a given project in achieving CDM registration by issuing LOA or not.
- q Being small and marginalised there hasn't been much interests shown by any project developer for CDM Project and so far there has been very little queries.

The DNA Structure and Approval Process

Note:

There is an established National CDM Committee. This is the working committee that decides on whether to issue LON or LOA. The DNA is only there to sign off on the decisions by the NCDMC.



Plans for Low Carbon Development

- q Development of Renewable Energy Investment Plan with assistance from ADB/WB/IFC for submission to SREP Committee by June 2013.
- q Development of Energy Efficiency Investment Plan with assistance from SPC to complete by May 2013.
- q Current low carbon projects include:
 - Ø 15-20MW Hydro-power scheme for Honiara grid -Feasibility Study stage.
 - Ø Small scale hydro development programme for 5 provincial centers power grids – Feasibility Study to commence end of 2012.
 - Ø Pilot scheme on solar-home-systems for rural households using user-pay system commencing initially with 2000 households. Currently, there are more than 70,000 households who use either kerosene lamps, wood/coconut shells or other means for lighting in the rural areas.

Plans for Low Carbon Development

q Current low carbon projects include:

- Ø Electrification of rural schools and clinics through solar power. The total number of schools in Solomon Islands (2009 records) is 1,245 schools and includes: 520 Early Childhood Education (ECE), 507 primary schools; 167 community high schools; 16 provincial secondary schools, 9 national secondary schools, and 26 rural training centres.
- Ø Private investment in geothermal resource assessment is currently on-going with plans to harness geothermal resource to feed into the national grid
- Ø Interest by private investors to develop solar energy to feed into the grid.

PINS Developed under ACP MEA Project

- **Renewable Energy:** PoA for Promotion of small hydro power in Solomon Islands
- **Energy Efficiency:** PoA for Supply Side – Energy Efficiency on Solomon Islands Electricity Authority (SIEA) power stations.
- **Waste:** PoA for Solid Waste Management in Solomon Islands

Future Needs and Engagements

- Provide guidance to interested/potential project developers for the detail design of PDDs or further PIN development.
- Continuous capacity building at National Level
- Continuous technical support from donor organizations and partners

THANK YOU

